

# SMARTSeal PRISM OneKit® and QuikVU® Clamp

Universal Vacuum Fitting Clamp with Torque Control

Patent No.: US 11,187,358 B2

Clamp Optional



**Versatile, Fully Assembled,  
Color-coded SubFab Seal System**

## SMARTSeal PRISM OneKit® Attributes

- Affordable without compromise
- Clean room assembled and stringently inspected
- Resilient to high temperatures
- Withstands amplified energies & aggressive gases
- Performs reliably, durably and consistently
- Eliminates common causes of premature failure
- Fully assembled kit reduces maintenance time
- Customizable color-coding system identifies seal assignment
- Minimized downtime

SMARTSeal  
**PRISM**  
oneKit®

# Introducing SMARTSeal PRISM OneKit®



## Why reinvent the seal?

It is widely known that, for SubFab applications, traditional FFKM seals, while great performers, are not cost effective. Neither are filler-diluted FFKMs, specialty cross-sections, re-engineered entering rings or custom shaped glands. These approaches to SubFab sealing performance limit supply options, raise potential safety concerns and add to long term costs.

There's a better path to SubFab sealing performance: SmartSeal PRISM OneKit®.

### PRISM OneKit® ...One simple solution.

Commonplace today, many manufacturers change out their Viton seals to a FFKM. While seemingly innocuous or convenient, the practice is problematic.

Stretching and twisting of the seal during assembly routinely leads to leaks, compression set, potentially compromised safety and premature failure.

By contrast, the PRISM OneKit® is a complete clean room assembled and stringently inspected seal system. No assembly is required.

### No compromise.

Applied Seals' new SmartSeal PRISM OneKit® yields unparalleled performance across every SubFab application. Expressly designed for SubFab manufacturing economies and exceptionally resilient to extreme operating temperatures, PRISM OneKit® handles more aggressive gases and intensive gas flows. PRISM OneKit® delivers sealing integrity without compromise. Reliability and long term SubFab durability are, at last, affordable.

### Downtime mitigated.

SmartSeal PRISM OneKit® reduces maintenance time too.

Employing an innovative, systematic color-coding system, PRISM OneKit® cuts down time by identifying what seal is in use without tooling tear-down. Never again will you find yourself delayed while determining the correct seal for every process and every location.

PRISM OneKit® is ideally suited for foundry work too. And its color-coding system can be customized to fit your specific operations. PRISM OneKit® helps you make the most of your resources and delivers more uptime productivity.

## ASNA QuikVU® Clamp

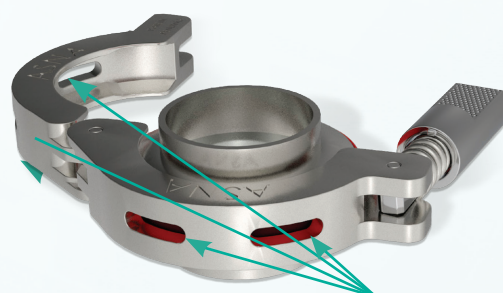
ASNA offers a universal clamp to fit all NW flange applications and provide enhancement to applications using PRISM seal as the OneKit. This unique clamp features a simple but efficient mechanism which not only mitigates risks, but also provides constant torque with recommended values. Four QuikVU® windows facing towards different directions allow users convenience to observe the color of inside PRISM ring regardless of how/where the clamp is installed and oriented.

### How it works?

ASNA's goal is to make a clamp compact and compatible for various application conditions. This OneKit clamp is significantly different from wing-nut clamps and features the attributes below:

- Special engineered thumb nut and clamp arms which contain a spring and stopper mechanism. This allows a user to apply preset torque specifications without any wrenches.
- Preset spring compressed length design to achieve recommended torque for prevention of over-torque or under-torque issues.
- Nut notch mates with the clamp notch (Close Position) or de-mating (Open Position), the spring on the clamp functions as a constant force to keep its position as one turns the nut. The spring itself will also sustain constant force and prevent looseness from vibration, which are benefits inherited from the spring toggle clamp.

### Stainless Steel and High Durability Built-to-last



QuikVU® Windows located at both side of the clamp.

	PRISM clamp	Spring toggle clamp	Wing-nut clamp
<b>Torque control+</b>	●	●	●
<b>Resistance to vibration</b>	●	●	●
<b>Compatibility</b>	●	●	●
<b>Bulk</b>	●	●	●
<b>Color check visibility</b>	●	●	●
<b>Safety vs. cost</b>	●	●	●

● Excellent ● Good ● Poor